

Jupiter Inlet Vicinity Boating Infrastructure



(Partial Funding Provided by the Florida Fish and Wildlife Conservation Commission)

This photomap (SGEF-138) was prepared in November 2000 by the Florida Sea Grant College Program.

Nearby Movable Bridges

Location	Bridge Designation	Clearance (at MHW)
Hobe Sound ¹	S.R. 708, Hobe Sound	21 ft
Jupiter Island ¹	S.R. 707, Jupiter Island	25 ft
Jupiter ¹	U.S. 1	26 ft
Jupiter ¹	S.R. 706, Indiantown	35 ft
Juno Beach ¹	Donald Ross Road	35 ft
Palm Beach Gardens ²	PGA Blvd.	25 ft

¹ Open on demand.

² No openings Mon., Fri., 7 to 9 AM and 4 to 7 PM, except on 1-4 hour and 3-4 hour. Also, no openings Sat., Sun., and Federal holidays, 8 AM to 6 PM, except on hour and at 20 and 40 minutes after.

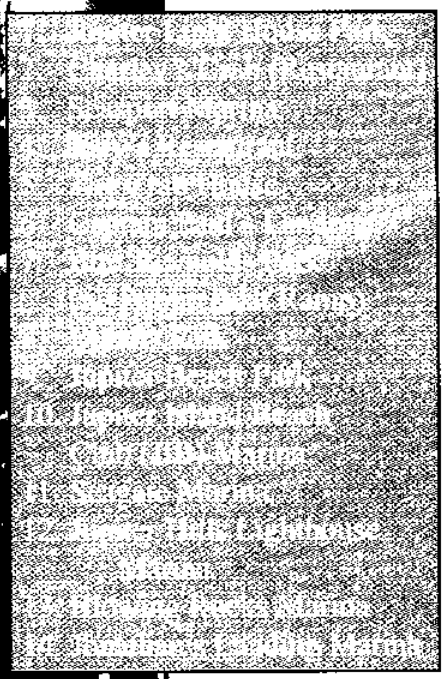
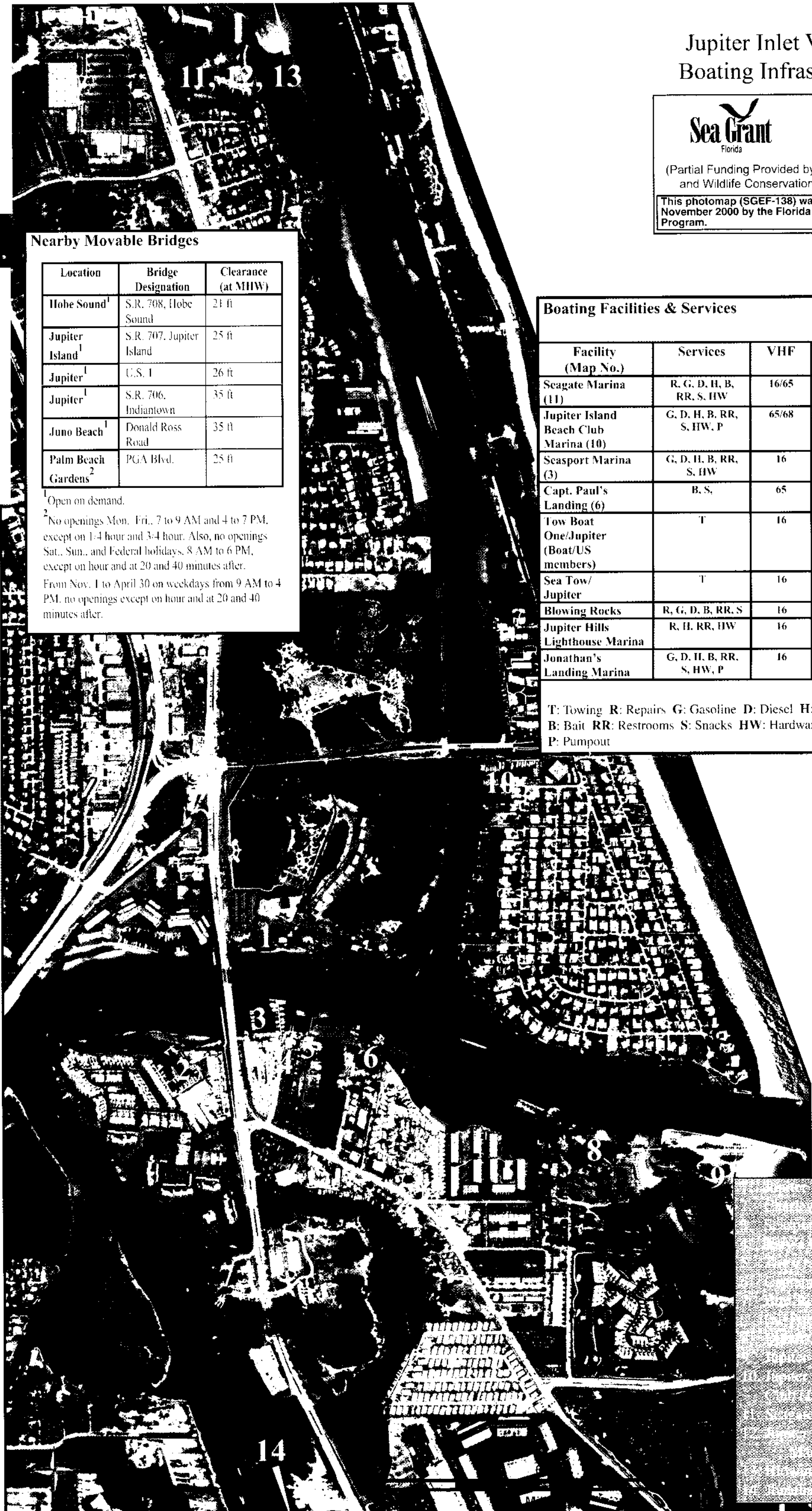
From Nov. 1 to April 30 on weekdays from 9 AM to 4 PM, no openings except on hour and at 20 and 40 minutes after.

Boating Facilities & Services

Facility (Map No.)	Services	VHF	Phone
Seagate Marina (11)	R, G, D, H, B, RR, S, HW	16/65	746-2600
Jupiter Island Beach Club Marina (10)	G, D, H, B, RR, S, HW, P	65/68	746-4300
Seasport Marina (3)	G, D, H, B, RR, S, HW	16	575-0006
Capt. Paul's Landing (6)	B, S,	65	747-8745
Tow Boat One/Jupiter (Boat/US members)	T	16	626-1067 (office) 329-2550 (boat/cell)
Sea Tow/Jupiter	T	16	844-8056 (800) 286-5096
Blowing Rocks	R, G, D, B, RR, S	16	746-3312
Jupiter Hills Lighthouse Marina	R, H, RR, HW	16	744-0727
Jonathan's Landing Marina	G, D, H, B, RR, S, HW, P	16	747-8980

T: Towing R: Repairs G: Gasoline D: Diesel H: Haulout
B: Bait RR: Restrooms S: Snacks HW: Hardware
P: Pumpout

LOAN COPY ONLY



Jupiter Inlet Vicinity



(Partial Funding Provided by the Florida Fish and Wildlife Conservation Commission)

Data Sources

Bathymetry: Florida Inland Navigation District; Morgan & Eklund, Inc., 2000 field survey (mlw datum)

Seagrass: Loxahatchee River Environmental Control District, 1998 field survey

Aids to navigation: Florida Inland Navigation District

Manatee signs: Florida Inland Navigation District

This photomap (SGEF-137) was prepared in November 2000 by the Florida Sea Grant College Program. Its purpose is to help boaters identify sensitive marine habitats and shoal areas where traffic and anchoring should be avoided.

All sea grass beds should be considered non-navigable and not suitable for boating activities. Mariners must bear all responsibility for seamanship, piloting, and navigation.

Speed Definitions

Idle Speed: A vessel that is operating at idle speed is proceeding at the minimum speed that will maintain the steerageway of the vessel.

Slow Speed: A vessel that is operating at slow speed is completely off plane, has settled into the water, and is proceeding without wake or with minimum wake. Slow speed also means no speed greater than that which is reasonable and prudent to avoid either intentionally or negligently annoying, molesting, harassing, disturbing, colliding with, injuring, or harming manatees and which comports with the duty of all persons to use due care under the circumstances.

25 MPH Speed: A vessel that is operating at a maximum of 25mph, is not operating at an unsafe speed for the specific waterway conditions, does not have an elevated bow that restricts visibility, and is not producing an excessive wake that unreasonably or unnecessarily endangers other vessels or natural resources of the state.

Boating Regulations

Boating rules and regulations are enforced by Federal, state, and local authorities. To help ensure a legal, safe, and environmentally friendly boating experience, please:

- Obey posted speed limits. Most canals and marinas and many channels call for idle or slow speed. When in doubt, slow down.
- Watch your wake. You are responsible for any damage or injury it may cause.
- Use nautical charts in unfamiliar waters.
- Know the navigational rules of the road.
- Don't mix alcohol and boating. More than half of all boating accidents involve alcohol.

Boater Education Law

In order to operate a boat with a motor of 10 HP or more, anyone 21 years of age or younger is required to either have successfully completed a National Association of State Boating Law Administrators (NASBLA) approved boating education course or a temporary certificate examination and possess boating education and photo ID cards. Exceptions include (1) persons accompanied in a vessel by someone exempt from the requirement and (2) nonresidents who have completed an approved course in another state, are visiting Florida, and are operating an out-of-state boat. For more information on Boater Education, call 1-800-BOAT or go to www.state.fl.us/fwc.

Depth (feet) at Mean Lower Low Water (MLLW)

>2 to 3	4 to 5
>3 to 4	>5

Navigation Aids

- ▲ Green Mark
- ▲ Red Mark

Signs

- Boating Safety Zone
- Manatee Zone
- Speed Limit

Seagrass Bed

0.25

0.25

Miles

Resource Directory

Jupiter Police Department (561) 746-6201

Palm Beach County

Sheriff's Office (561) 688-3000

Marine Enforcement Unit (561) 732-4715

Park Facilities Rentals (561) 966-6611

Martin County Sheriff's Office (561) 746-6311

US Coast Guard Station, Lake Worth Inlet (561) 844-5030

Boat Registration (561) 355-2622

Boat Safety Rules 1-800-368-5647

Fishing License Information 1-800-ASK-FISH

Wildlife Hospital (561) 546-8281

Injured Sea Turtles/Manatees (561) 575-5455

Injured Birds (561) 744-1646

Beach Conditions (561) 624-0065

Environmental Crimes Hotline 1-877-272-8335

Marine Advisory Program (561) 233-1745
(Education program in areas related to commercial and recreational fishing and seafood processing and marketing)

Jupiter Inlet District (561) 746-2223

Fish & Wildlife Conservation Commission

Wildlife Alert Line 1-800-432-2046

General Information (561) 640-6100

Division of Law Enforcement (formerly Florida Marine Patrol)

Jupiter Office (561) 624-6935

Hotline (Miami) 1-800-DIAL-FMP